

Mido-suji CHALLENGE

御堂筋チャレンジ

Nov.5 (Sun), 2017 ▶ Nov.20 (Mon)

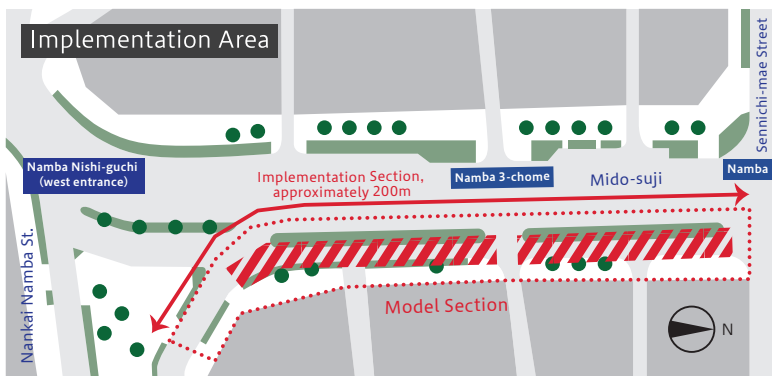
Mido-suji, the main street in Osaka

This year marks the 80th since it was constructed. New street projects, like the widening of pavement of the model section in front of Namba Station, have been promoted steadily.

Please envision and feel Mido-suji as it will be reborn and become a main and widely known street during these 16 days!!



Two-week pilot program to make Mido-suji a renewed street



Some requests about this pilot program are as follows

During this pilot program, the bicycle road will be temporarily narrowed and some equipment (tables, chairs, etc.) will be set along the sidewalks for pedestrians to enjoy their comfortable stay.

We request that you :

- ▶ will refrain from riding a bicycle on the sidewalks and parking it at the nearby shopping area as well.
- ▶ use the facilities with good manners.
- ▶ answer a survey about the influence of street passage on pedestrians and bike riding.

For more information, contact

Mido-suji, Sennichi-mae Southern Street Maintenance and Improvement Committee Office

[ARPAK Co., Ltd. Architects Regional Planners & Associates·Kyoto]

☎ 06-6205-3600

Mido-suji 80th Anniversary Memorial Project Promotion Committee Office

[Osaka City Construction Bureau Road Division]

☎ 06-6615-6786

f 御堂筋チャレンジ

Mainly produced by : Mido-suji 80th Anniversary Memorial Project Promotion Committee / Mido-suji, Sennichi-mae Southern Street Maintenance and Improvement Committee

Planned and conducted by : Model Section Pilot Program Planning & Producing Promotion Joint Team (Minami-Town Planning Network / Minami Mido-suji Assembly / Namba Safety Town Planning Committee)

Cooperated by : CACTUS Co., Ltd. / Sanwajitsugyo Co., Ltd. (Café Eikokuya) / General Incorporated Association Reed / MASH Corporation / GREENS CORPORATION, Inc. / FM802 Co., Ltd. / General Incorporated Association Grand Front Osaka TMO / NPO Corporation Naniwa BLUESY / NPO Corporation Homedoor / Kesion Co., Ltd. / LEM DESIGN STUDIO Co., Ltd. / Kanazawa Electronics Co., Ltd. / Nankai Building Service Co., Ltd. (as of Oct. 20)

mido-suji80.info



Mido-suji as your favorite & relaxing street

The challenge to create a lively and comfortable space for everyone

1 Mido-suji + café street

Produced by
Eikokuya (Café street)

Nov. 5 (Sun) • 10 (Fri) • 11 (Sat)
11:30 AM ▶ 7:30 PM

Nov. 12 (Sun) • 17 (Fri) • 18 (Sat)
11:30 AM ▶ 9:00 PM



It is an outdoor café, popular abroad, on the main street. Have a laid-back tea time here.

2 Mido-suji + market

Supported by
Ashiharabashi UP MARKET

Nov. 10 (Fri) • 11 (Sat) • 12 (Sun)
11:30 AM ▶ 7:30 PM



It is a market space supported by talented artists from Ashiharabashi UP MARKET.

3 Mido-suji + street live performance

Supported by
FM802 & Grand Front Osaka, Naniwa BLUESY

Nov. 5 (Sun) • 11 (Sat)
11:30 AM ▶ 7:30 PM

Nov. 12 (Sun) • 18 (Sat) • 19 (Sun)
11:30 AM ▶ 9:00 PM



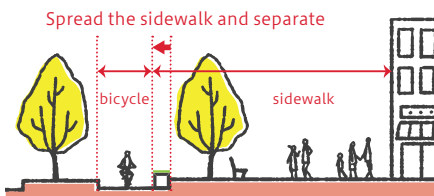
There will be live performances supported by the musicians registered to MUSIC BUSKER or Naniwa Blues Street groups.

Challenge to create a Walker & Bicycle Friendly Street

Every day throughout this event

1 Pedestrian and vehicle separation

We'd like to conduct a survey about the street passage with separate bicycle lane and sidewalk for the safety of bicycle riders and pedestrians.



2 Making the street an open relaxation space

We will set some tables, chairs, and arranged flowers along the widened sidewalks to create an open space for a comfortable atmosphere.

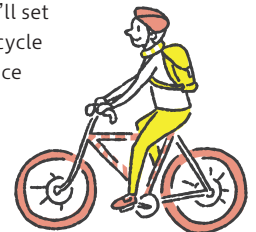


3 Share Cycle HUB chari

Produced by Homedoor, NPO Corporation

Bicycle Sharing has become widespread quickly in Japan and abroad. We'd like more people to share bicycles for sightseeing or business, and we'll set some temporary bicycle parking lots to reduce illegal parking.

※You need to be registered to use the bikes.



Contemporaneous Event

1 Illuminations along the Mido-suji, A Special Attraction for Winter

Nov. 12 (Sun) ~ every day
(Lighting hours ▶ 5:00 PM ~ 11:00 PM)

Mido-suji Street will be lit up in the latter half of the pilot program period. The purple-colored model section will be the best photo spot.

Program Schedule

| | 11/5 Sun | 6 Mon | 7 Tue | 8 Wed | 9 Thu | 10 Fri | 11 Sat | 12 Sun | 13 Mon | 14 Tue | 15 Wed | 16 Thu | 17 Fri | 18 Sat | 19 Sun | 20 Mon | |
|--|----------|-------|-------|-------|-------|--------|--------|--------|--------|--------|--------|--------|--------|--------|--------|--------|--|
| 1 Mido-suji + café street | → | | | | | → | → | → | | | | | | → | | | |
| 2 Mido-suji + market | | | | | | → | → | → | | | | | | | | | |
| 3 Mido-suji + street live performance | → | | | | | | → | → | | | | | | | → | | |
| Pedestrian and vehicle separation, Making the street an open relaxation space, Share Cycle | → | | | | | | | | | | | | | | | | |
| Illuminations along the Mido-suji, A Special Attraction for Winter | | | | | | | | | → | | | | | | | | |

※Some programs might be changed depending on weather conditions. The details will be shown on the event's Facebook page.

About the main producers

Mido-suji 80th Anniversary Memorial Project Promotion Committee: The committee was established to promote the Mido-suji 80th Anniversary Memorial Project and lead it to a successful collaboration between various organizations and the city government. (President of the committee: Hirofumi Yoshimura, Mayor of Osaka City)

Mido-suji, Sennichi-mae Southern Street Maintenance and Improvement Committee: The organization has established the committee to develop the model section of Sennichi-mae Street in a joint private-public initiative. (Representative: Shinmei Azuma, President of Namba Eki-mae and Namba 3-chome Nishimachi Neighborhood Store Association) We have worked on developing the model section plan through discussions with the declaration of "The world-class safe and comfortable Main Street" since November 20, 2016.